



**2 Spinney Lane Cranbourne Hall Park, Winkfield, Windsor, SL4 4UD**  
**£80,000**

 **HORLER**

## 2 Spinney Lane Cranbourne Hall Park, Winkfield, Windsor, SL4 4UD

\*\*\*NO ONWARD CHAIN\*\*\*

Located within Cranbourne Hall Park in Winkfield, Windsor, this one-bedroom mobile home offers and provides simple, practical accommodation suitable for a single occupant or couple.



### **Property Summary**

Inside, there is a bright living area with windows allowing in good natural light, along with a double bedroom, a second single bedroom come office and a functional kitchen and bathroom. The layout makes good use of the available space and is easy to maintain.

Outside, the home benefits from off-street parking and a private rear garden, offering space for outdoor seating or light gardening. Cranbourne Hall Park is a quiet, established site with a small on-site shop and a friendly residential community.

Overall, this is a straightforward and affordable home in a pleasant setting, ideal for buyers looking for a low-cost property in the Windsor area.

### **General Information**

Pitch Fee From 01 Jan2026 £255.45

Family Park

Council Tax Band 'A'

### **Legal Note**

\*\*\*Although these particulars are thought to be materially correct their accuracy cannot be guaranteed and they do not form part of any contract\*\*\*.





# Spinney Lane SL4

Approximate Gross Internal Floor Area = 39.3 sq m / 423 sq ft

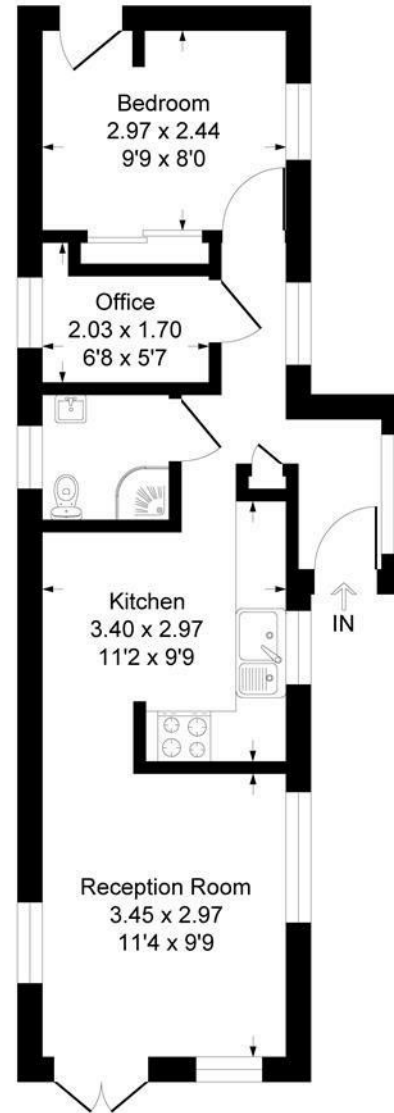


Illustration for identification purposes only, measurements are approximate, not to scale.  
Produced By Esjay Property Marketing